

1. Download and Install "DfuSeDemo"

[www.djbacktrack.com/files/en.stsw-stm32080.zip](http://www.djbacktrack.com/files/en.stsw-stm32080.zip)

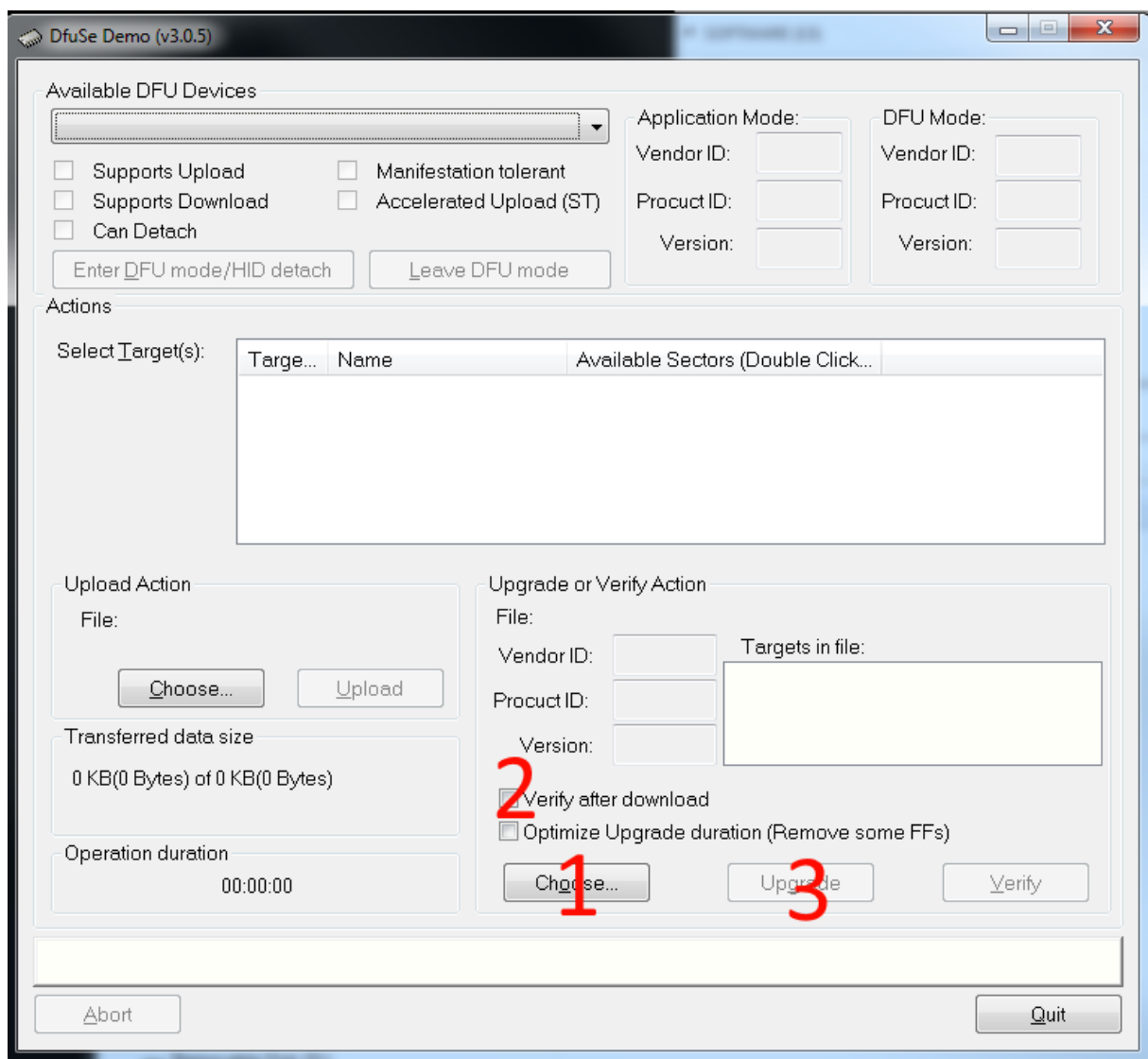
2. Move the jumper from flash to USB on the mod PCB

3. Connect the mod to your PC using a mini USB. Loosen the mod screw if you cant fit the cable. Just make sure the ground cable is still connected if you installed the ground under the screw holding the mod.

4. When you PC asks for the driver you will find it here:

C:\Program Files (x86)\STMicroelectronics\Software\DfuSe v3.0.5\Bin\Driver

5. Open DfuSe Demo and power on the turntable. You should now see something in the "Available DFU Devices" drop down. (not shown below)



6. Press Choose under "Upgrade or Verify Action". Select the file attached. (TUPM\_R2xx.dfu)

7. Check "Verify after Download"

8. Press "Upgrade" and wait until upload done. (5 secs or so)

9. Power off the turntable and set the jumper to "Flash" again.

All done!